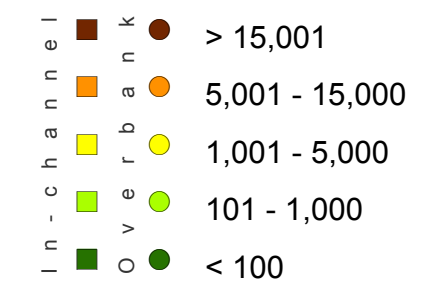


ATTACHMENT L

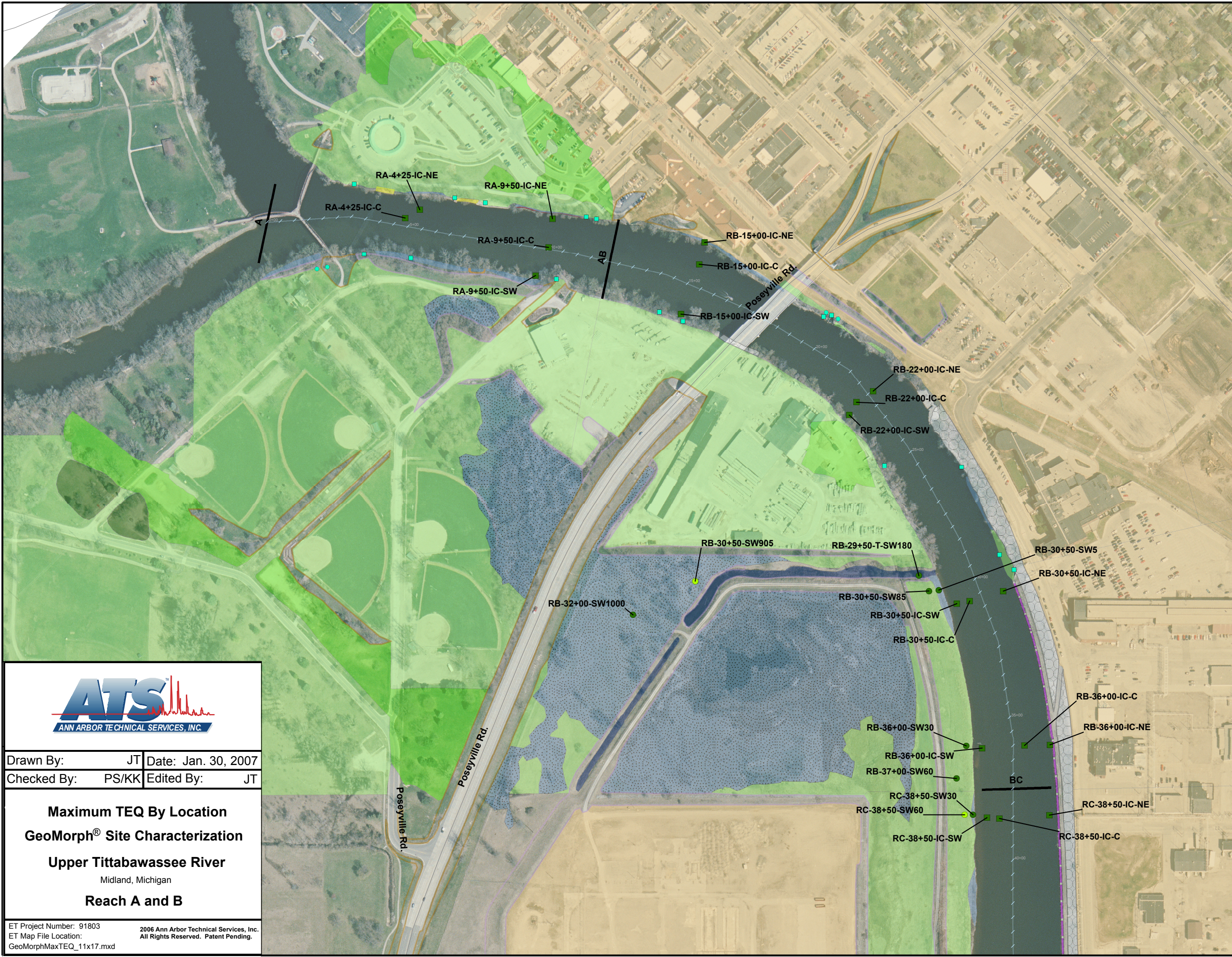
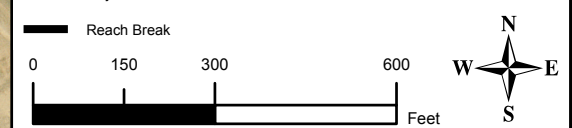
MAXIMUM TEQ BY LOCATION MAPS

*GEOMORPH[®] SITE CHARACTERIZATION
UPPER TITABAWASSEE RIVER*

Soil TEQ Concentration



⊗ Erosion Scar Sample

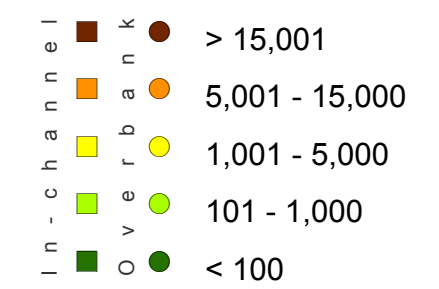


Drawn By: JT Date: Jan. 30, 2007
 Checked By: PS/KK Edited By: JT

Maximum TEQ By Location
GeoMorph® Site Characterization
Upper Tittabawasse River
 Midland, Michigan
Reach A and B

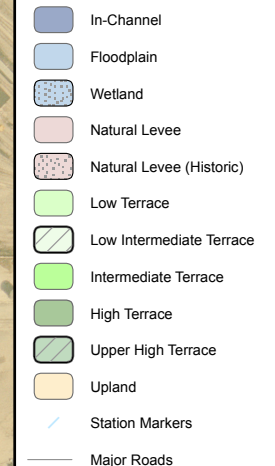
ET Project Number: 91803
 ET Map File Location:
 GeoMorphMaxTEQ_11x17.mxd
 2006 Ann Arbor Technical Services, Inc.
 All Rights Reserved. Patent Pending.

Soil TEQ Concentration

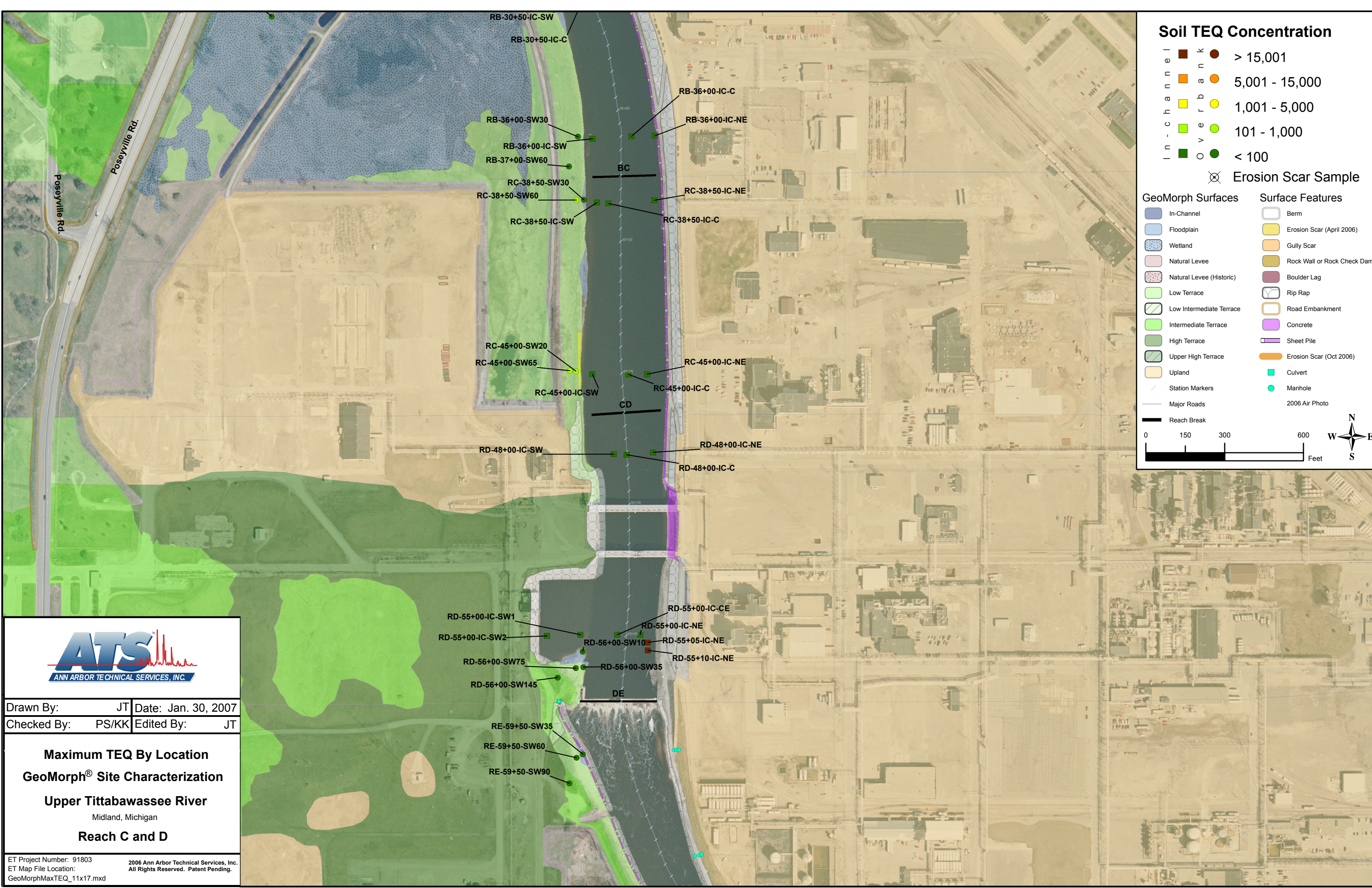
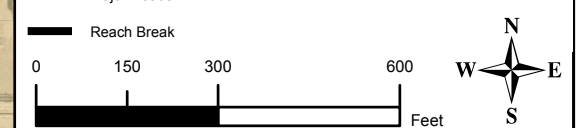
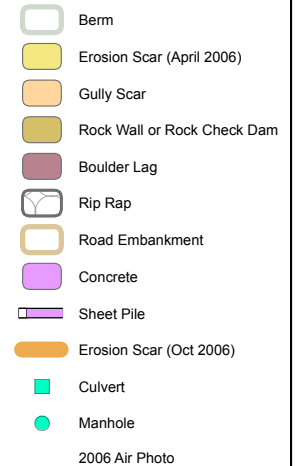


⊗ Erosion Scar Sample

GeoMorph Surfaces



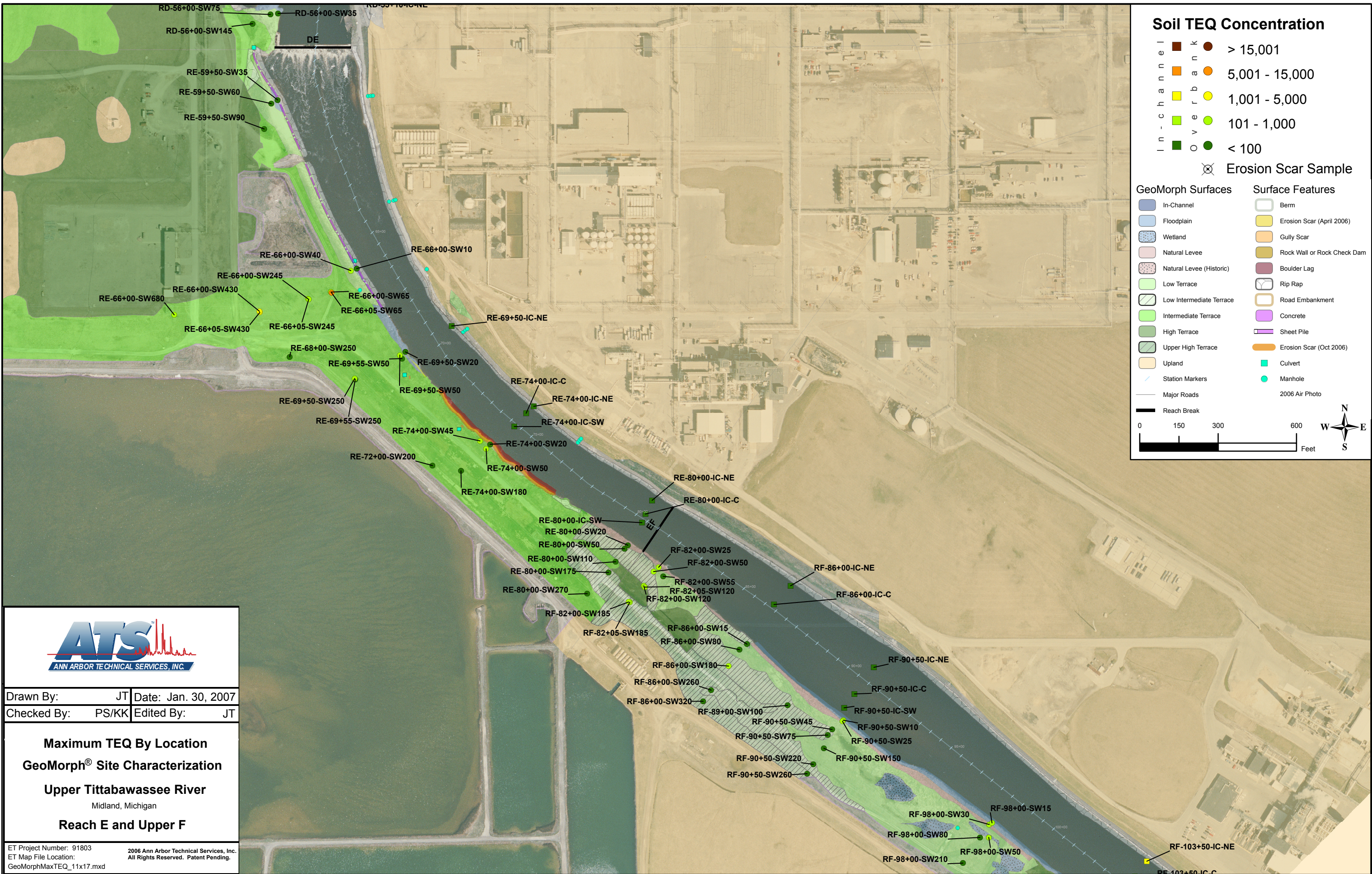
Surface Features



Drawn By: JT Date: Jan. 30, 2007
 Checked By: PS/KK Edited By: JT

Maximum TEQ By Location
GeoMorph® Site Characterization
Upper Tittabawasse River
 Midland, Michigan
Reach C and D

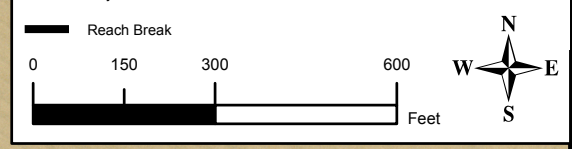
ET Project Number: 91803 2006 Ann Arbor Technical Services, Inc. All Rights Reserved. Patent Pending.
 ET Map File Location: GeoMorphMaxTEQ_11x17.mxd




Soil TEQ Concentration

- █ > 15,001
 - █ 5,001 - 15,000
 - █ 1,001 - 5,000
 - █ 101 - 1,000
 - █ < 100
- ⊗ Erosion Scar Sample

- | GeoMorph Surfaces | Surface Features |
|----------------------------|-------------------------------|
| █ In-Channel | █ Berm |
| █ Floodplain | █ Erosion Scar (April 2006) |
| █ Wetland | █ Gully Scar |
| █ Natural Levee | █ Rock Wall or Rock Check Dam |
| █ Natural Levee (Historic) | █ Boulder Lag |
| █ Low Terrace | █ Rip Rap |
| █ Low Intermediate Terrace | █ Road Embankment |
| █ Intermediate Terrace | █ Concrete |
| █ High Terrace | █ Sheet Pile |
| █ Upper High Terrace | █ Erosion Scar (Oct 2006) |
| █ Upland | █ Culvert |
| █ Station Markers | █ Manhole |
| █ Major Roads | 2006 Air Photo |
| █ Reach Break | |





ANN ARBOR TECHNICAL SERVICES, INC.

Drawn By: JT	Date: Jan. 30, 2007
Checked By: PS/KK	Edited By: JT

Maximum TEQ By Location

GeoMorph® Site Characterization

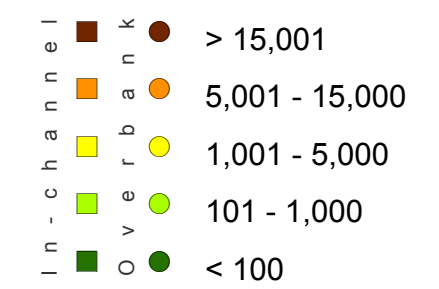
Upper Tittabawassee River

Midland, Michigan

Reach E and Upper F

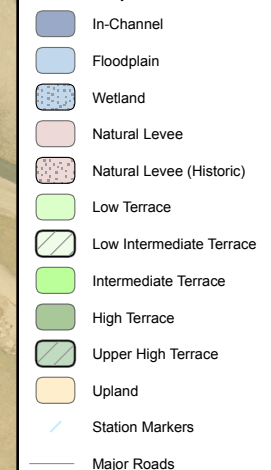
ET Project Number: 91803 2006 Ann Arbor Technical Services, Inc. All Rights Reserved. Patent Pending.
 ET Map File Location: GeoMorphMaxTEQ_11x17.mxd

Soil TEQ Concentration

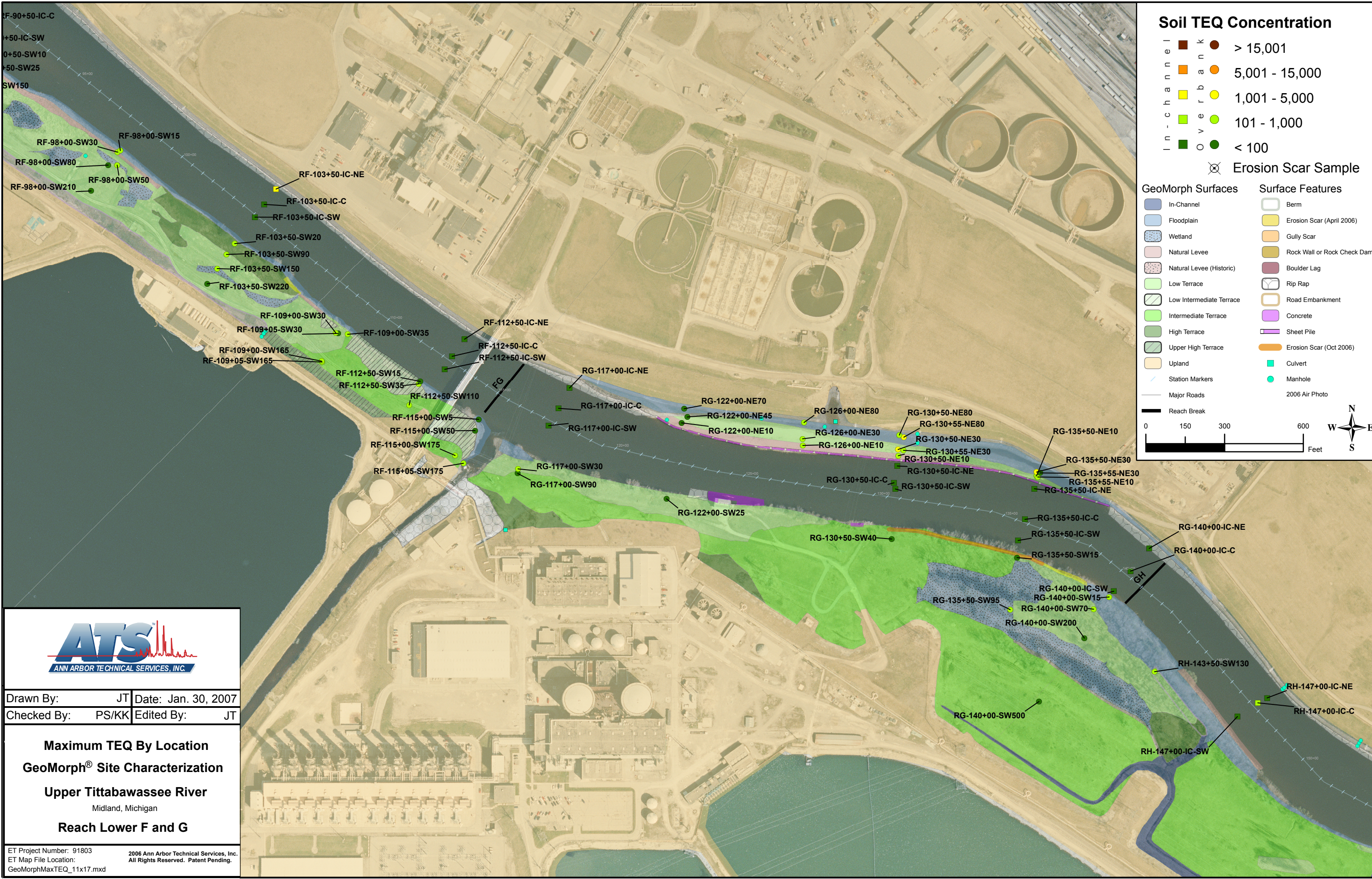
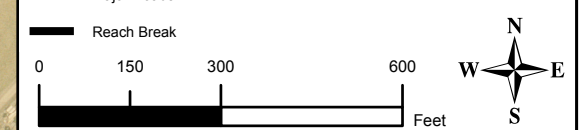


⊗ Erosion Scar Sample

GeoMorph Surfaces



Surface Features



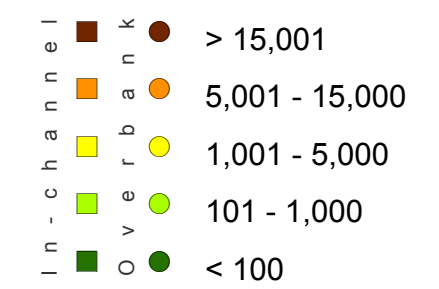
Drawn By: JT Date: Jan. 30, 2007
 Checked By: PS/KK Edited By: JT

Maximum TEQ By Location
GeoMorph® Site Characterization
Upper Tittabawassee River
 Midland, Michigan
Reach Lower F and G

ET Project Number: 91803
 ET Map File Location:
 GeoMorphMaxTEQ_11x17.mxd

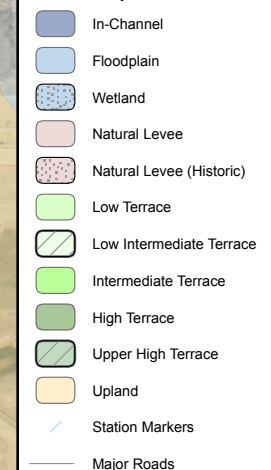
2006 Ann Arbor Technical Services, Inc.
 All Rights Reserved. Patent Pending.

Soil TEQ Concentration

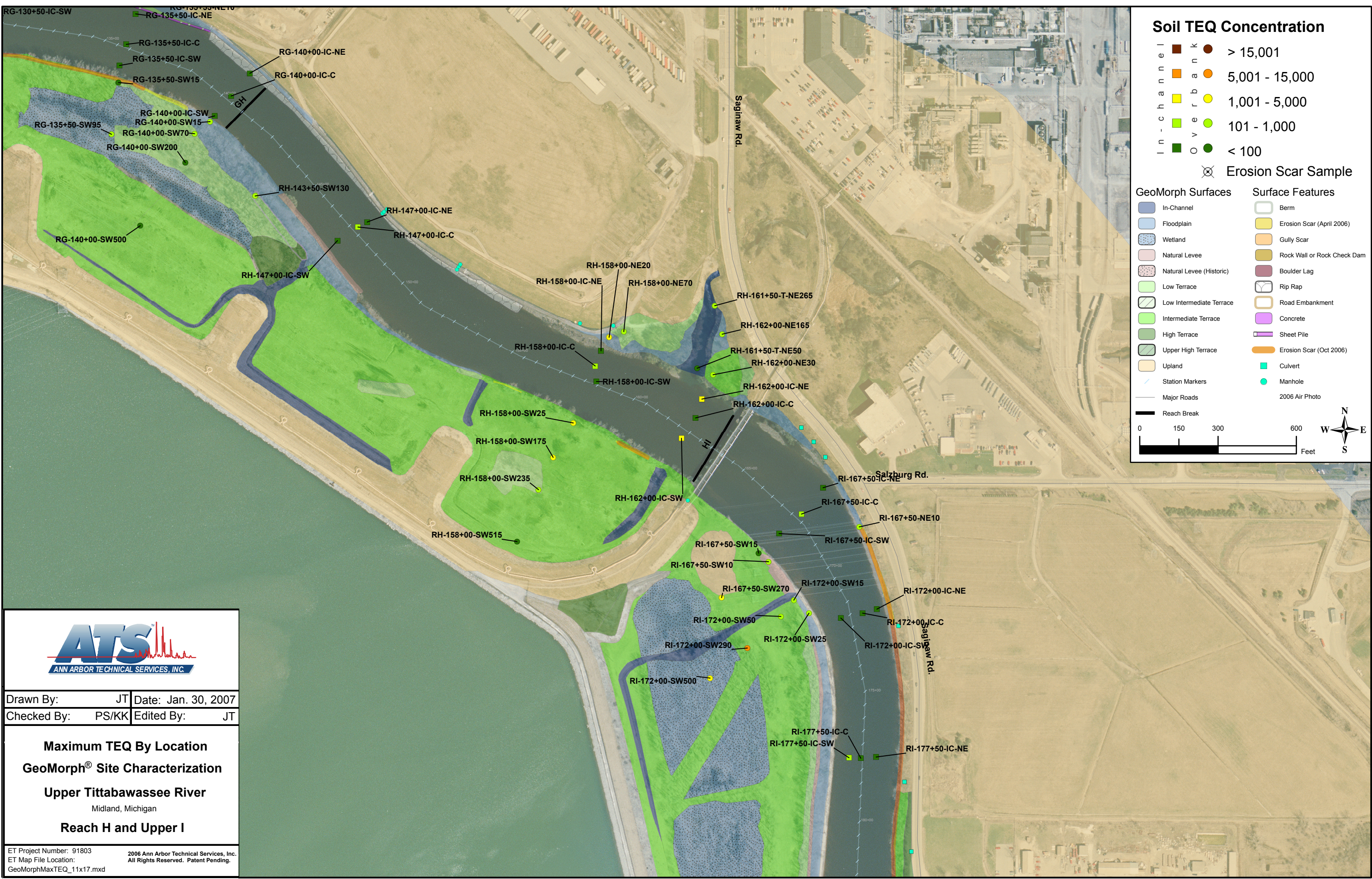
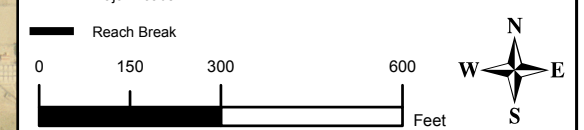


⊗ Erosion Scar Sample

GeoMorph Surfaces



Surface Features

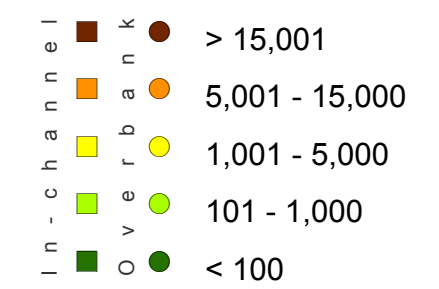


Drawn By: JT Date: Jan. 30, 2007
 Checked By: PS/KK Edited By: JT

Maximum TEQ By Location
GeoMorph® Site Characterization
Upper Tittabawasse River
 Midland, Michigan
Reach H and Upper I

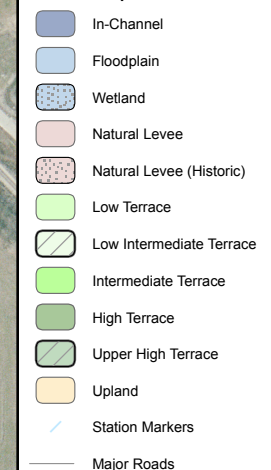
ET Project Number: 91803
 ET Map File Location: GeoMorphMaxTEQ_11x17.mxd
 2006 Ann Arbor Technical Services, Inc.
 All Rights Reserved. Patent Pending.

Soil TEQ Concentration

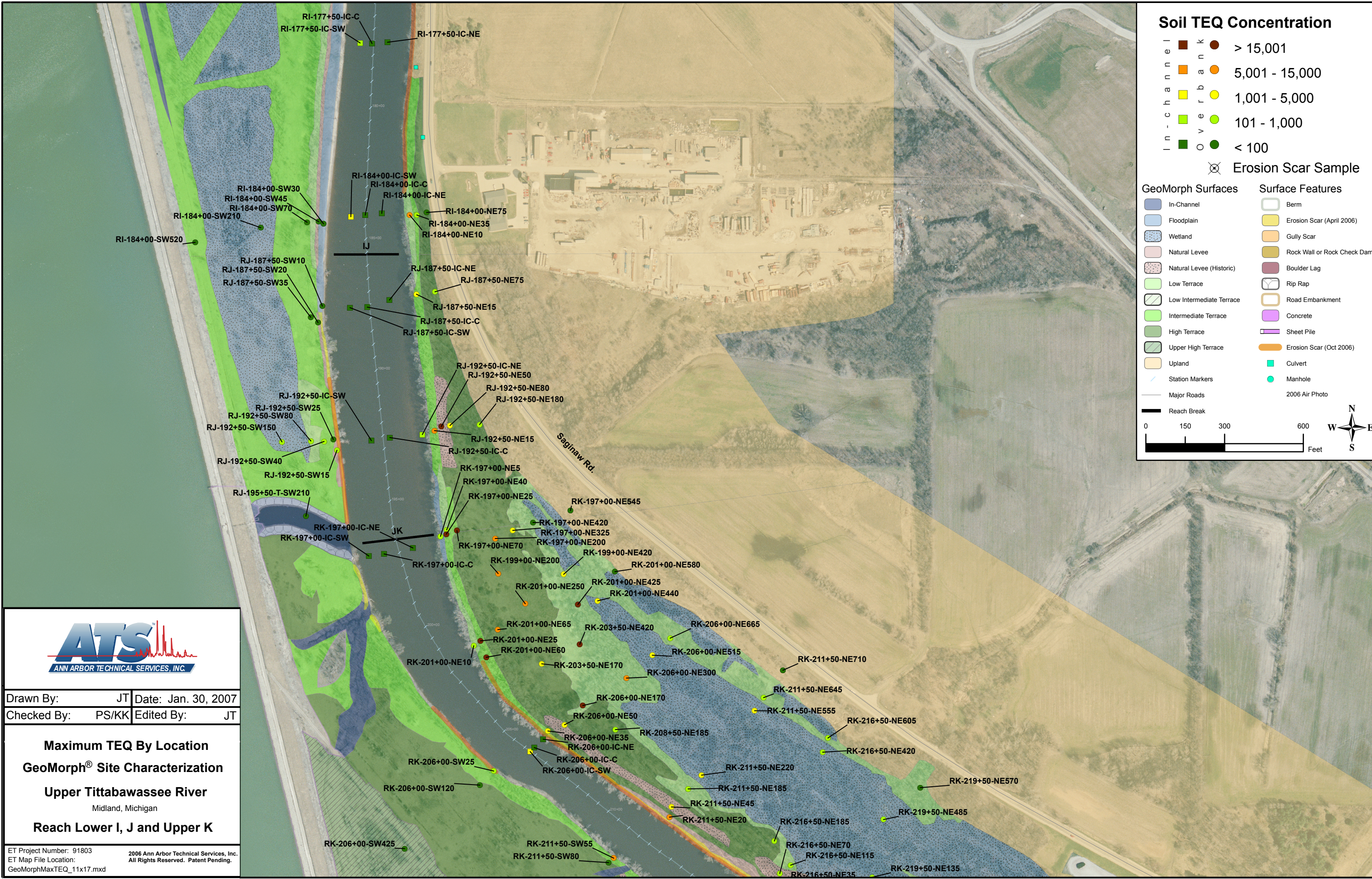
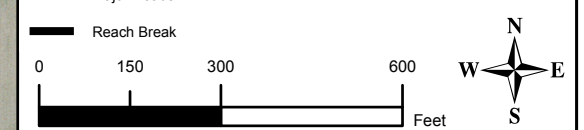


⊗ Erosion Scar Sample

GeoMorph Surfaces



Surface Features

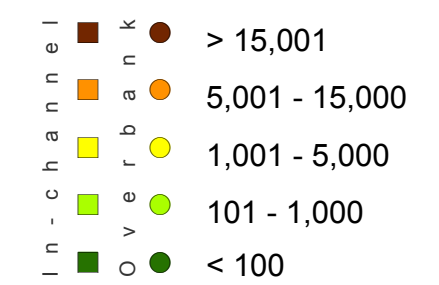


Drawn By: JT Date: Jan. 30, 2007
 Checked By: PS/KK Edited By: JT

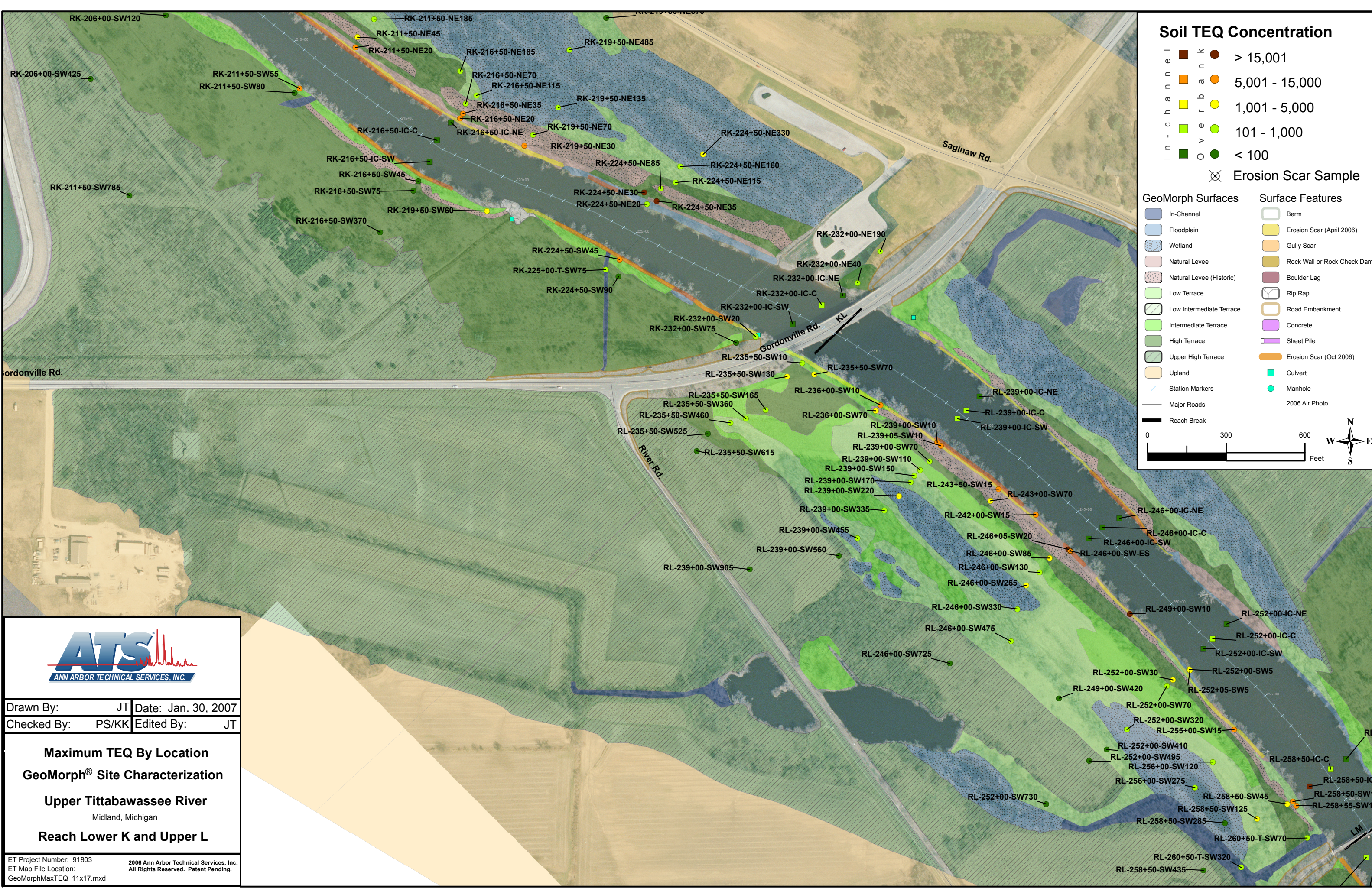
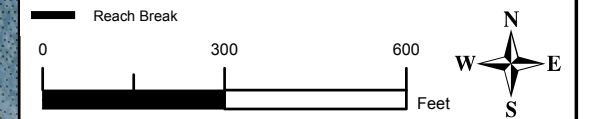
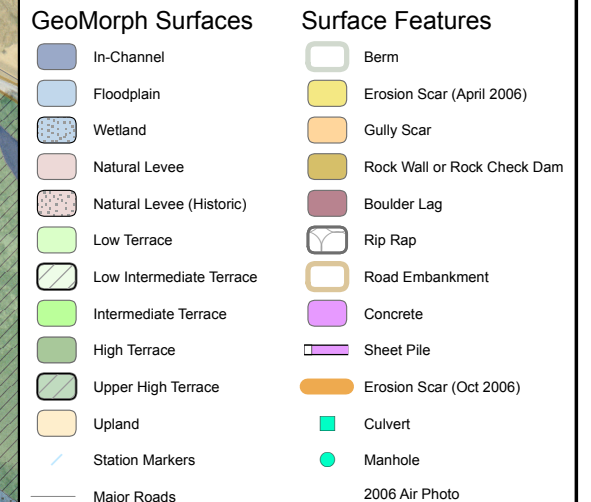
Maximum TEQ By Location
GeoMorph® Site Characterization
Upper Tittabawassee River
 Midland, Michigan
Reach Lower I, J and Upper K

ET Project Number: 91803
 ET Map File Location: 2006 Ann Arbor Technical Services, Inc. All Rights Reserved. Patent Pending.
 GeoMorphMaxTEQ_11x17.mxd

Soil TEQ Concentration



⊗ Erosion Scar Sample

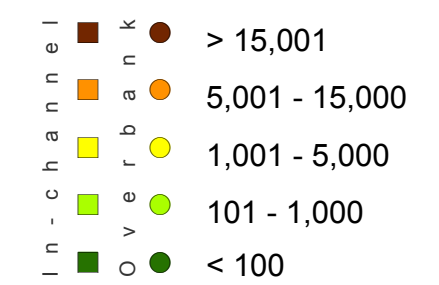


Drawn By: JT Date: Jan. 30, 2007
 Checked By: PS/KK Edited By: JT

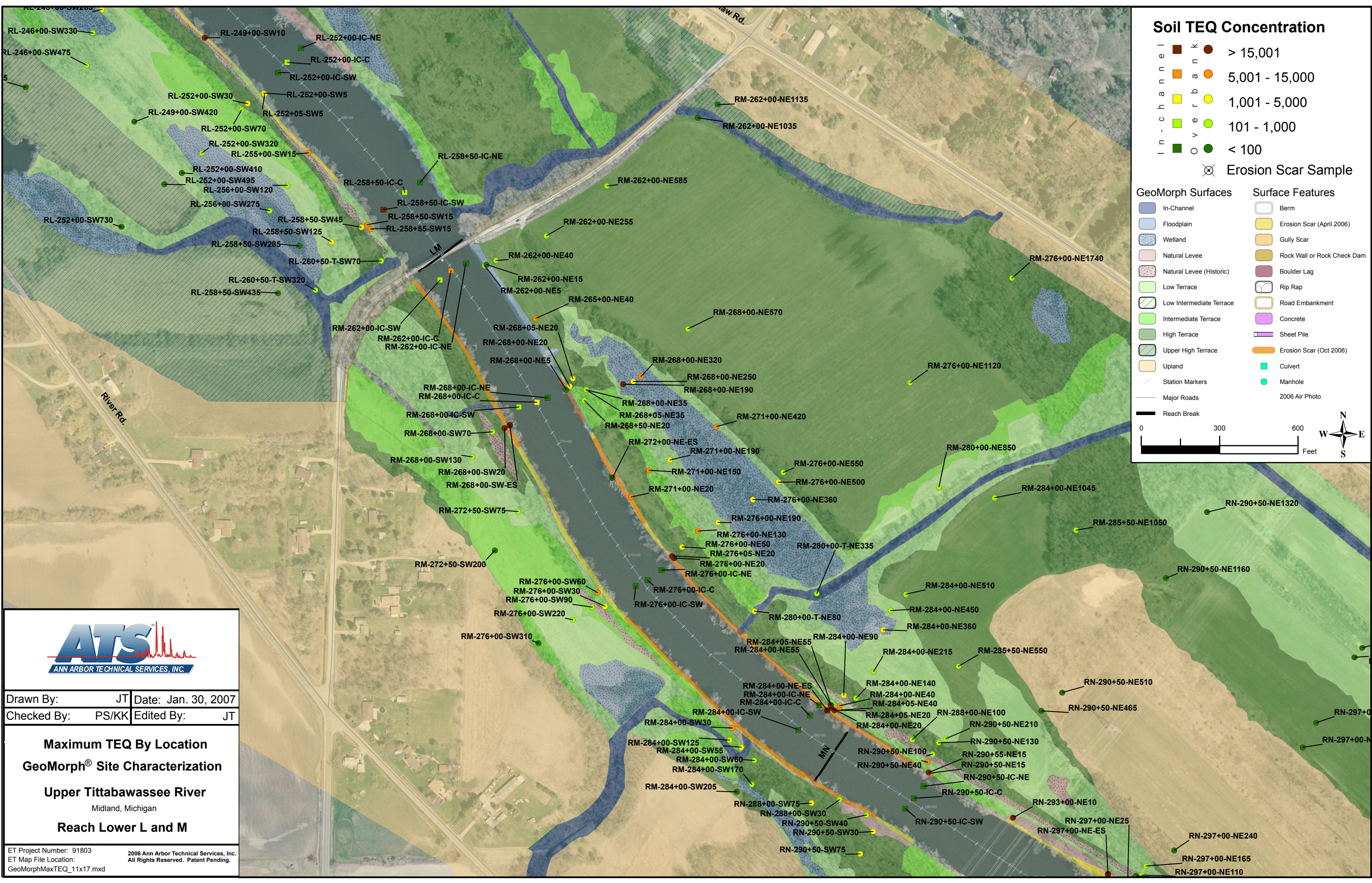
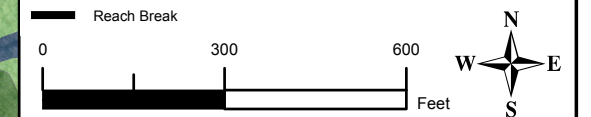
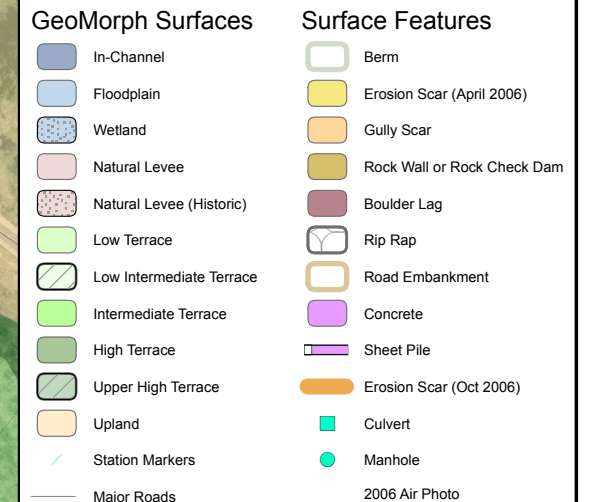
Maximum TEQ By Location
GeoMorph® Site Characterization
Upper Tittabawasse River
 Midland, Michigan
Reach Lower K and Upper L

ET Project Number: 91803
 ET Map File Location: 2006 Ann Arbor Technical Services, Inc.
 GeoMorphMaxTEQ_11x17.mxd All Rights Reserved. Patent Pending.

Soil TEQ Concentration



⊗ Erosion Scar Sample

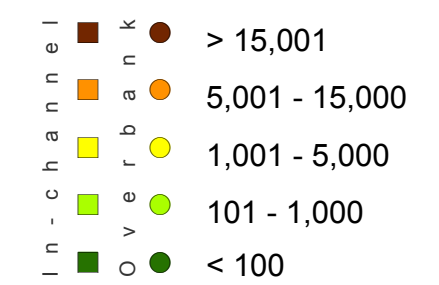


Drawn By: JT Date: Jan. 30, 2007
 Checked By: PS/KK Edited By: JT

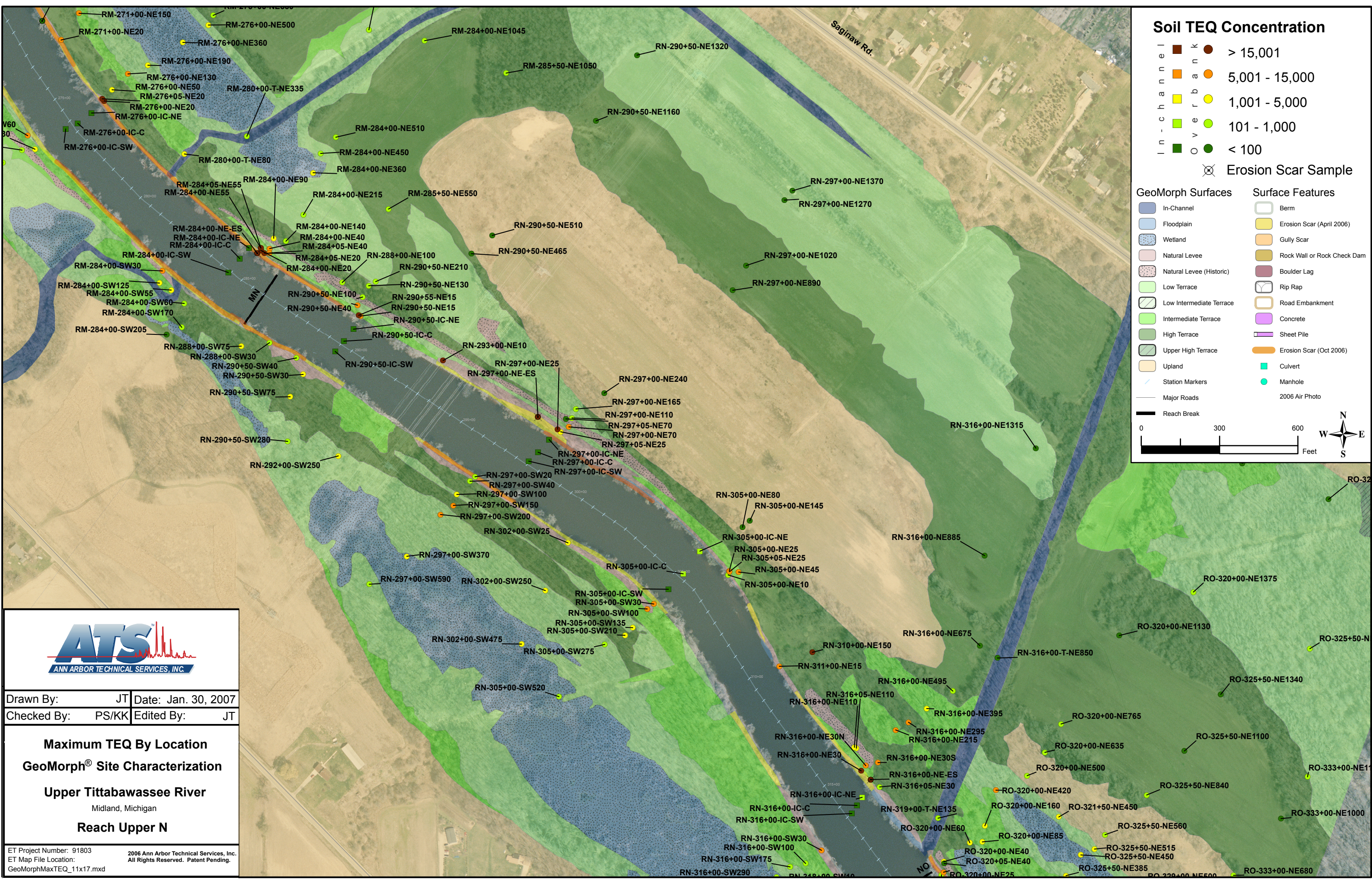
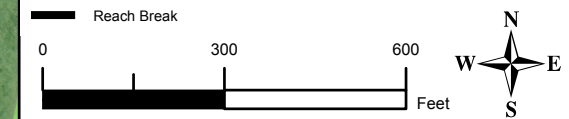
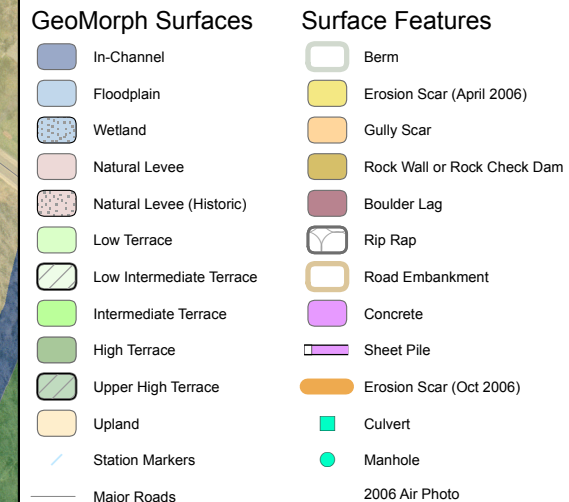
Maximum TEQ By Location
GeoMorph® Site Characterization
Upper Tittabawasse River
 Midland, Michigan
Reach Lower L and M

ET Project Number: 91803
 ET Map File Location: 2006 Ann Arbor Technical Services, Inc. All Rights Reserved. Patent Pending.
 GeoMorphMaxTEQ_11x17.mxd

Soil TEQ Concentration



⊗ Erosion Scar Sample

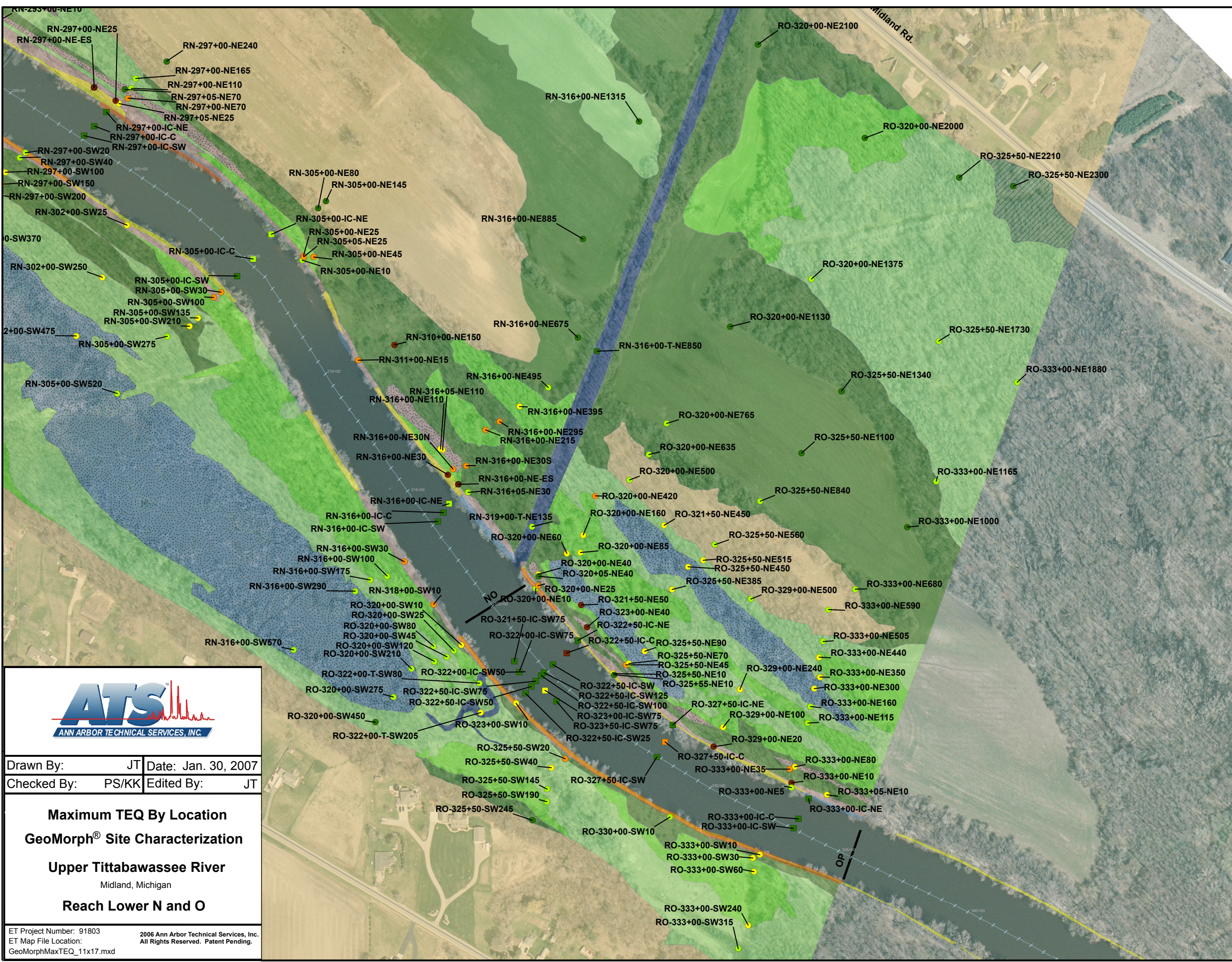
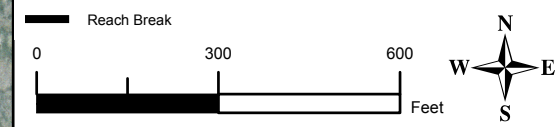
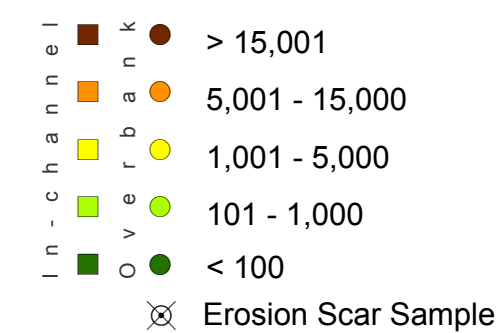


Drawn By: JT Date: Jan. 30, 2007
 Checked By: PS/KK Edited By: JT

Maximum TEQ By Location
GeoMorph® Site Characterization
Upper Tittabawassee River
 Midland, Michigan
Reach Upper N

ET Project Number: 91803
 ET Map File Location: 2006 Ann Arbor Technical Services, Inc. All Rights Reserved. Patent Pending.
 GeoMorphMaxTEQ_11x17.mxd

Soil TEQ Concentration



Drawn By: JT Date: Jan. 30, 2007
 Checked By: PS/KK Edited By: JT

Maximum TEQ By Location
GeoMorph® Site Characterization
Upper Tittabawassee River
 Midland, Michigan
Reach Lower N and O

ET Project Number: 91803
 ET Map File Location:
 GeoMorphMaxTEQ_11x17.mxd
 2006 Ann Arbor Technical Services, Inc.
 All Rights Reserved. Patent Pending.